



Inland Counties Emergency Medical Agency

1425 South D Street, San Bernardino, CA 92415-0060 ■ (909) 388-5823 ■ Fax (909) 388-5825 ■ www.icema.net

Serving San Bernardino, Inyo, and Mono Counties
Daniel Munoz, Interim EMS Administrator
Reza Vaezazizi, MD, Medical Director

DATE: June 13, 2022

TO: Hospital CEOs, ED Directors/Managers and PLNs - San Bernardino County

FROM: Daniel Munoz
Interim EMS Administrator

SUBJECT: HOSPITAL BED DELAY REPORT FOR JANUARY - MAY 2022

The Inland Counties EMS Agency (ICEMA) is providing the January through May 2022, hospital ambulance patient offload delay (APOD) report utilizing data retrieved from the ambulance provider computer aided dispatch records.

The APOD report provides the total number of:

- 9-1-1 transports to each hospital.
- Transports that resulted in APOD.
- APOD hours/minutes calculated beginning 25 minutes after the ambulance arrives at the hospital.

If you have any questions, please contact Mark Roberts, Technical Consultant, at (909) 388-5804 or via e-mail at mark.roberts@cao.sbcounty.gov.

DM/MR/mae

c: Megan Barajas, Regional Vice President, HASC
File Copy

BOARD OF DIRECTORS

Col. Paul Cook (Ret.)
First District

Janice Rutherford
Second District

Dawn Rowe
Vice Chair
Third District

Curt Hagman
Chairman
Fourth District

Joe Baca, Jr.
Fifth District

Leonard X. Hernandez
Chief Executive Officer

Inland Counties Emergency Medical Agency



Bed Delay Report

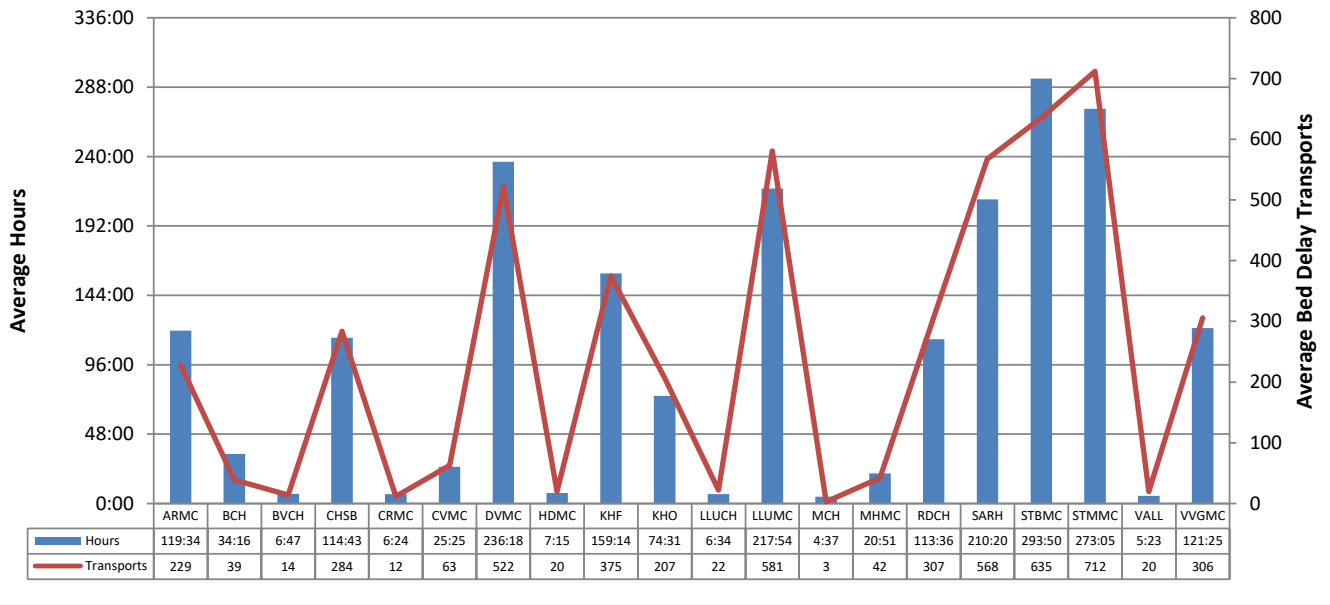
January 2022 – May 2022

Report Detail

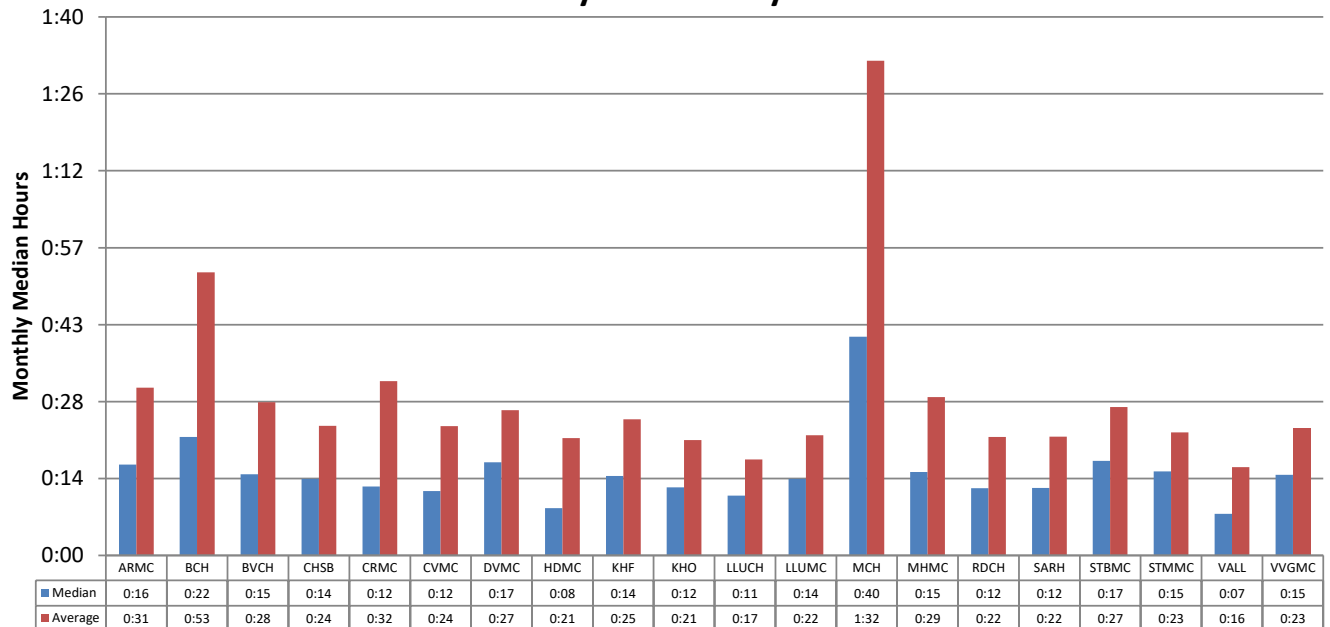
This report collects and summarizes the "Bed Delay" for a selected group of hospitals. "Bed Delay" is the time between when the transfer of care takes place and the signature lock time is completed. The first 25 minutes are excluded from consideration. The only type of transports that are considered are 911 calls where the patient is treated and transported via ambulance. Please note that only ICEMA providers are included in this analysis.

Abbreviated Name	Full Name
ARMC	Arrowhead Regional Medical Center
BCH	Barstow Community Hospital
BVCH	Bear Valley Community Hospital
CHSB	Community Hospital San Bernardino
CRMC	Colorado River Medical Center
CVMC	Chino Valley Medical Center
DVMC	Desert Valley Hospital Center
HDMC	Hi-Desert Medical Center
KHF	Kaiser Hospital Medical Center - Fontana
KHO	Kaiser Hospital Medical Center - Ontario
LLUCH	Loma Linda University Children's Hospital
LLUMC	Loma Linda University Medical Center
MCH	Mountains Community Hospital
MHMC	Montclair Hospital Medical Center
RDCH	Redlands Community Hospital
SARH	San Antonio Regional Hospital
STBMC	St. Bernardine Medical Center
STMMC	St. Mary Medical Center
VALL	JLP VA Loma Linda
VVGMC	Victor Valley Global Medical Center

Bed Delay Hours* and Bed Delay Transports Average per Hospital for an Average Month Period January 2022 – May 2022



Time Bed Delay Patients Were on Bed Delay per Patient Median and Average by Hospital January 2022 – May 2022



*Note: Bed Delay Hours excludes the first 25 minutes of each transport. ICEMA uses the time from transfer of care to when the signature lock time is completed. Only ICEMA providers are included in this analysis.

Total Bed Delay Hours* and Bed Delay Transports by Hospital January 2022 – May 2022

Hospital	Total Bed Delay Hours*	Bed Delay Transports	Total Transports	Bed Delay Percentage	Average Bed Delay by Patient	Median Bed Delay by Patient
ARMC	597:51	1,143	4,479	25.5%	0:31	0:16
BCH	171:20	194	1,928	10.1%	0:53	0:22
BVCH	33:56	71	869	8.2%	0:28	0:15
CHSB	573:35	1,419	2,712	52.3%	0:24	0:14
CRMC	32:04	59	314	18.8%	0:32	0:12
CVMC	127:05	315	1,371	23.0%	0:24	0:12
DVMC	1181:33	2,608	4,365	59.7%	0:27	0:17
HDMC	36:17	99	2,149	4.6%	0:21	0:08
KHF	796:14	1,873	5,724	32.7%	0:25	0:14
KHO	372:36	1,035	3,212	32.2%	0:21	0:12
LLUCH	32:54	110	442	24.9%	0:17	0:11
LLUMC	1089:34	2,904	5,737	50.6%	0:22	0:14
MCH	23:09	15	385	3.9%	1:32	0:40
MHMC	104:19	211	948	22.3%	0:29	0:15
RDCH	568:01	1,536	3,820	40.2%	0:22	0:12
SARH	1051:41	2,838	7,000	40.5%	0:22	0:12
STBMC	1469:14	3,176	5,254	60.4%	0:27	0:17
STMMC	1365:29	3,559	5,316	66.9%	0:23	0:15
VALL	26:58	98	451	21.7%	0:16	0:07
VVGMC	607:05	1,530	3,214	47.6%	0:23	0:15
Total	10261:04	24,793	59,690	41.5%	0:24	0:14

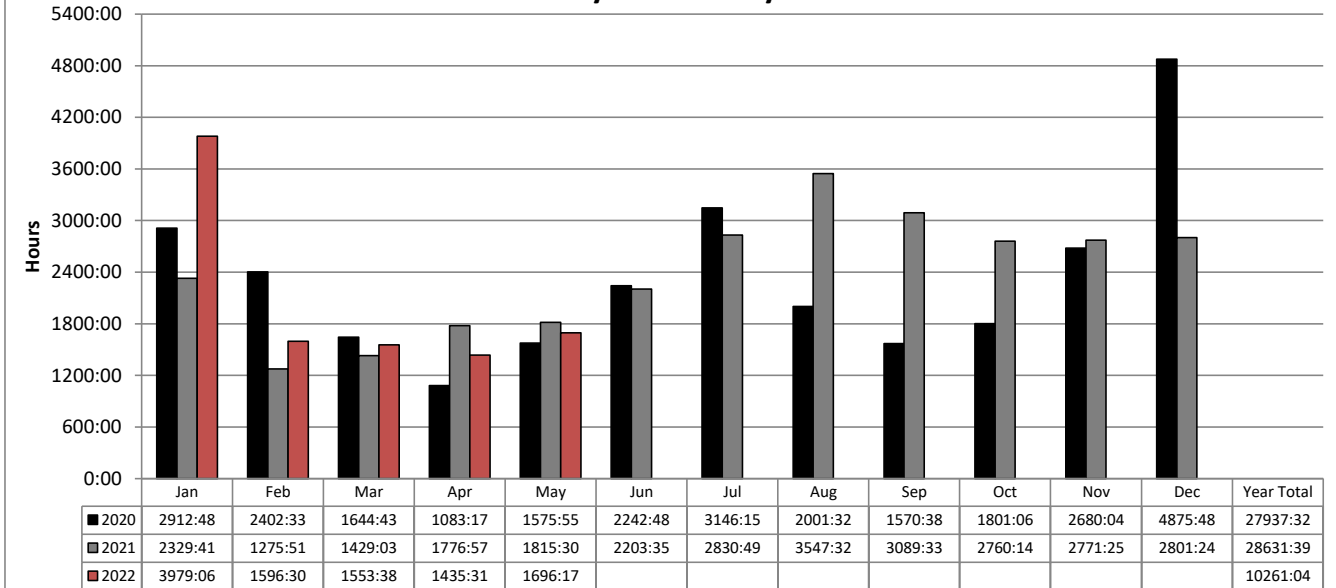
*Note: Bed Delay Hours excludes the first 25 minutes of each transport. ICEMA uses the time from transfer of care to when the signature lock time is completed. Only ICEMA providers are included in this analysis.

**Total Monthly Bed Delay Hours* by Hospital
January 2022 – May 2022**

Hospital	Jan	Feb	Mar	Apr	May	Jun	Jul	Aug	Sep	Oct	Nov	Dec	Total	Average Bed Delay by Month
ARMC	272:19	124:06	85:54	62:39	52:52								597:51	119:34
BCH	15:50	25:02	32:15	53:22	44:48								171:20	34:16
BVCH	15:58	10:51	4:33	2:00	0:32								33:56	6:47
CHSB	259:02	65:17	73:48	101:31	73:55								573:35	114:43
CRMC	4:47	4:38	6:34	6:32	9:30								32:04	6:24
CVMC	85:50	5:47	13:36	8:14	13:36								127:05	25:25
DVMC	415:35	178:25	191:52	166:38	229:01								1181:33	236:18
HDMC	17:51	4:46	2:35	3:48	7:15								36:17	7:15
KHF	333:44	101:13	88:43	112:23	160:09								796:14	159:14
KHO	151:40	31:18	53:51	46:23	89:22								372:36	74:31
LLUCH	5:20	1:46	5:18	9:29	10:58								32:54	6:34
LLUMC	400:42	235:43	146:57	149:22	156:49								1089:34	217:54
MCH	2:14	6:43	3:33		10:38								23:09	4:37
MHMC	80:04	9:14	8:06	1:47	5:06								104:19	20:51
RDCH	284:56	80:45	71:55	52:26	77:57								568:01	113:36
SARH	430:05	181:51	247:15	81:36	110:52								1051:41	210:20
STBMC	467:03	209:57	243:12	292:52	256:08								1469:14	293:50
STMMC	417:35	220:19	207:47	222:20	297:25								1365:29	273:05
VALL	8:54	1:15	2:50	8:31	5:26								26:58	5:23
VVGMC	309:29	97:25	62:53	53:27	83:49								607:05	121:25
Total	3979:06	1596:30	1553:38	1435:31	1696:17								10261:04	2052:12

*Note: Bed Delay Hours excludes the first 25 minutes of each transport. ICEMA uses the time from transfer of care to when the signature lock time is completed. Only ICEMA providers are included in this analysis.

**San Bernardino County
Total Bed Delay Hours* by Month
January 2022 – May 2022**



**Total Bed Delay Hours* and Bed Delay Transports by Hospital
January 2022 – May 2022**

Hospital	2020				2021				2022 YTD			
	Total BD Hours*	BD Transports	Total Transports	BD %	Total BD Hours*	BD Transports	Total Transports	BD %	Total BD Hours*	BD Transports	Total Transports	BD %
ARMC	1338	2,933	10,087	29.1%	941	2,322	10,765	21.6%	597	1,143	4,479	25.5%
BCH	315	461	4,842	9.5%	215	421	4,598	9.2%	171	194	1,928	10.1%
BVCH	68	162	1,631	9.9%	31	96	1,766	5.4%	33	71	869	8.2%
CHSB	927	2,566	6,612	38.8%	1119	3,009	6,339	47.5%	573	1,419	2,712	52.3%
CRMC	33	108	751	14.4%	58	129	733	17.6%	32	59	314	18.8%
CVMC	279	638	4,338	14.7%	143	444	2,885	15.4%	127	315	1,371	23.0%
DVMC	3501	5,662	10,014	56.5%	3799	6,335	9,857	64.3%	1181	2,608	4,365	59.7%
HDMC	150	343	5,030	6.8%	83	208	5,163	4.0%	36	99	2,149	4.6%
KHF	2420	5,088	13,508	37.7%	1650	4,243	13,412	31.6%	796	1,873	5,724	32.7%
KHO	988	2,463	7,340	33.6%	650	2,071	6,949	29.8%	372	1,035	3,212	32.2%
LLUCH					14	32	101	31.7%	32	110	442	24.9%
LLUMC	2784	6,041	13,208	45.7%	2958	6,296	13,855	45.4%	1089	2,904	5,737	50.6%
MCH	35	48	800	6.0%	27	31	914	3.4%	23	15	385	3.9%
MHMC	126	311	2,602	12.0%	150	304	2,365	12.9%	104	211	948	22.3%
RDCH	2195	4,291	8,741	49.1%	1914	4,464	8,930	50.0%	568	1,536	3,820	40.2%
SARH	3178	7,691	16,369	47.0%	2011	6,502	17,040	38.2%	1051	2,838	7,000	40.5%
STBMC	3672	8,329	14,066	59.2%	4619	8,380	12,551	66.8%	1469	3,176	5,254	60.4%
STMMC	4210	8,115	12,366	65.6%	5576	9,272	12,249	75.7%	1365	3,559	5,316	66.9%
VALL	52	182	1,116	16.3%	33	133	1,079	12.3%	26	98	451	21.7%
VVGMC	1657	3,675	8,473	43.4%	2630	5,034	8,070	62.4%	607	1,530	3,214	47.6%
Total	27937	59,107	141,894	41.7%	28631	59,726	139,621	42.8%	10261	24,793	59,690	41.5%

*Note: Bed Delay Hours excludes the first 25 minutes of each transport. ICEMA uses the time from transfer of care to when the signature lock time is completed. Only ICEMA providers are included in this analysis.